

PART OF THE S.E. 1/4, OF SEC. 5, T.5N., R.1W., S.L.B. & M.
CITY CENTER AT SO. OGDEN COMMERCIAL SUBDIVISION
FIRST AMENDED PLAT

TAXING UNIT: 298

REVISED PARCELS 7, 8 AND 9

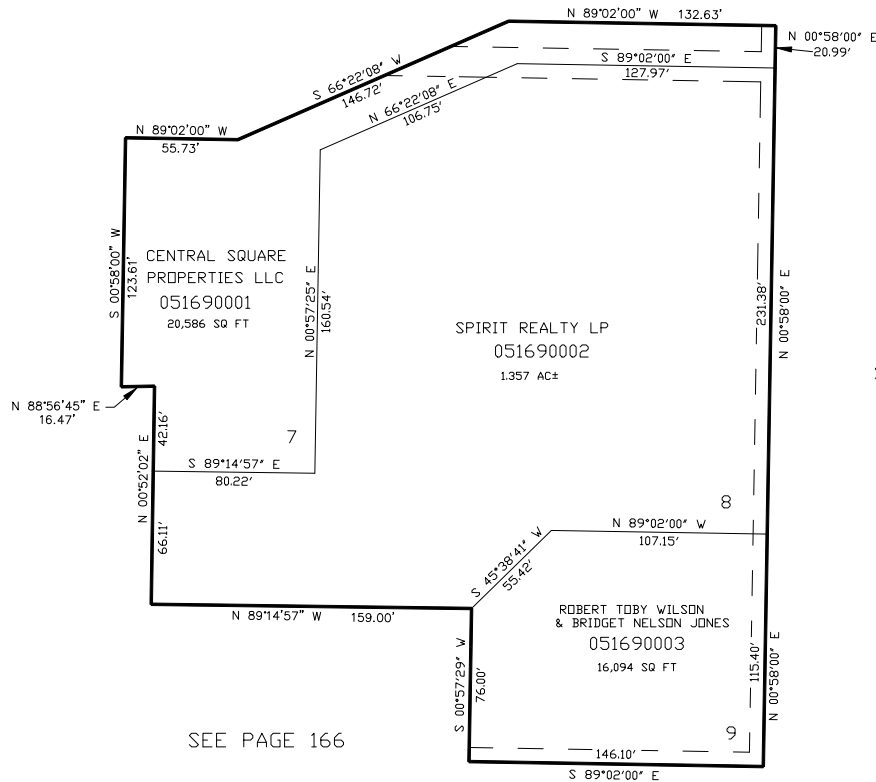
DELETED PARCELS 11 AND 12

IN SOUTH OGDEN CITY

SCALE 1" = 50'

SEE PAGE 166

SEE PAGE 166



SEE PAGE 126

SEE PAGE 166

SEE PAGE 129

7' UTILITY & DRAINAGE EASEMENTS EACH
SIDE OF PROPERTY LINES AS INDICATED
BY DASHED LINES EXCEPT AS OTHERWISE
SHOWN.

FOR COMPLETE ENG DATA SEE
ORIGINAL DEDICATION PLAT IN
BOOK 44, PAGE 21 OF RECORDS.